



**A special school
dedicated to
educating autistic
pupils aged 16 to 19**

Prospectus

Contents

03

Welcome from the head of The Rise School and Sixth Form

04

Welcome from the head of The Rise Sixth Form

05

Vision and values

06

Ambitious about Autism Schools Trust

07

Our co-located model

08

Our wraparound curriculum

11

Courses at West Thames College

14

Work experience

16

The Ambitious Approach

18

Our trans-disciplinary team

19

School-Wide Positive Behaviour Support

22

Keeping our students safe

22

Parent and carer support

23

Admissions

24

Contact us



“

The support and compassion shown by staff is unbelievable and without it, my son would not have achieved all that he has.”

Parent

Welcome from the head of The Rise School and Sixth Form

The Rise Sixth Form opened in 2017 and was built on the success of The Rise School. The provision has grown to accommodate 36 autistic students.

Our partnership with West Thames College enables our students to study a wide variety of courses at Level 2 or Level 3 while at the same time giving students the specialist autism support necessary for their success.

We have two pillars running throughout our school and sixth form which are both of equal importance: excellence in academic work and social progress.

Therefore, in addition to their West Thames College course, students undertake a wraparound curriculum consisting of three further qualifications: BTEC Level 2 WorkSkills, BTEC Level 2 Personal Growth and Development, and a London Institute of Banking and Finance course in educational finance. In addition, students have access to physical education lessons, wellbeing lessons, mental health first aiders and Positive Behaviour Support coaches.

A team of professionals, including a dedicated career advisor, support our students to successfully transition into university, supported internships, apprenticeships, work or a Level 4 course. In 2023 we had seven students with offers for university places.

Thank you for your interest in The Rise Sixth Form – we really hope you choose us. We welcome visitors so with this in mind please contact us for a tour of our provision. Please do check out our website, Twitter feed and photo gallery as they will give a genuine flavour of day-to-day life here in The Rise Sixth Form.



A handwritten signature in white ink that reads "Karen Oliver".

Karen Oliver
Head of The Rise School



Welcome from the head of The Rise Sixth Form

As the head of The Rise Sixth Form, my aim is to equip our students with the skills that will support their transition into adulthood.

This includes pursuing careers they are passionate about, creating and maintaining lasting relationships, having the resilience and problem-solving skills to overcome obstacles and becoming informed and active citizens.

Not only do we support students in their West Thames College courses, but we also provide a high-quality wraparound curriculum that prepares students for their independent adult lives. Our wraparound courses include personal finance, employability, personal growth and development, independent study and transition support.

We understand autism, and we want our students to be independent, happy and skilled young adults. We have the knowledge and experience to instil in young people the confidence they need to thrive in the wider world.

We look forward to working with you and your child on this vital journey.



Andrew Magee

Andrew Magee
Head of
The Rise Sixth Form

Vision and values

Autistic young people with social communication needs and social communication needs who can benefit from a range of high-quality courses.

In practice, this means that:

- Students are happy to come to sixth form every day and are proud of what they achieve.
- Parents and carers are confident that their children are safe, happy and making good progress, and that their voices are heard.
- All students are given the support and challenge they need to learn and succeed in the world beyond sixth form – their quality of life is key.
- All staff create consistently positive learning experiences that engage and challenge all students.

At our sixth form, we have added a fourth core value of 'be independent', as we recognise this is central to a high quality of life beyond education.

Preparing students for independence is at the forefront of our sixth form and guides the decisions we make around teaching and learning. We ensure that our curriculum and offer will allow students to develop the skills needed to become independent adults.

Our values

Our values underpin all that we do at The Rise School. They were chosen in a collaborative process that involved all our staff and pupils.

We teach our values explicitly and celebrate them frequently.

We know that our pupils will face challenges in their lives, but we're confident that, with the right strategies and attitude, they can flourish.





Ambitious about Autism Schools Trust

The Ambitious about Autism Schools Trust is a multi-academy trust that runs and supports the development of new special schools where autistic children and young people can be themselves and realise their ambitions.

The Rise School was set up by the Ambitious about Autism Schools Trust in 2014 as a special school dedicated to educating pupils with autism aged 4–18. The Trust welcomes opportunities and partnerships to achieve its aim of ensuring more autistic children and young people can access high-quality education and make outstanding progress.

The Rise School and Sixth Form is governed by the Ambitious about Autism Schools Trust. The Board of Trustees consists of people with the skills, competencies and perspectives we need to govern the school.



Our co-located model

The Rise School has a purpose-built sixth form on the fourth floor of the Sir Joseph Banks building at West Thames College.

Being co-located in West Thames College means that our students:

- are able to access the wide variety of courses on offer at West Thames College and attend lessons in their chosen course alongside students from the college
- are supported in their lessons by autism-trained staff
- can return to the sixth form base during breaks and for independent study
- benefit from a personalised wraparound curriculum, which aims to prepare them for adulthood, employment and higher education
- can keep up with their course commitments, thanks to one-to-one support and close monitoring that enables them to complete their chosen course successfully
- gain sole access to a suite of rooms consisting of a fully equipped ICT suite, a common room and several classrooms
- have access to quiet rooms when needed.



By working together, we can offer autistic young people a highly inclusive programme that allows them to achieve and progress. This is an important partnership for West Thames, bringing real benefits to learners, staff and, more broadly, our two organisations.”

Tracey Aust
Principal at West Thames College





Our wraparound curriculum

Our wraparound curriculum

At The Rise Sixth Form, we have a robust and purposeful wraparound curriculum that provides our students with academic, social and emotional skills. Our wraparound curriculum includes Level 2 courses and bespoke lessons designed to support students' holistic growth.

Personal growth and development

Our tailored personal growth and development curriculum expands students' understanding of important topics such as identity, relationships, rights and mental health. Our students are taught the importance of understanding their needs, and are given the confidence and knowledge not only to self-regulate but also to self-advocate.

We believe an effective social skills curriculum should be in place that supports students in forming genuine relationships with peers and adults.

The social skills curriculum also provides a structured, positive learning environment that supports their understanding of social norms.



I like that I can go to the main college for my lessons and make new friends, but I can also go back to The Rise Sixth Form and get the support I need.”

Student

Personal finance

Through our Level 2 Certificate in Financial Education, sourced from the London Institute of Banking and Finance, students develop knowledge and skills around personal finance, so they can make informed decisions about their money.

We teach students practical skills so they understand the value of money and how to avoid financial pitfalls. At the end of the course, students understand and can calculate deductions made on their pay slips; know how to budget and save; and understand careers and corresponding salaries, as well as different methods of payment. Our goal is to ensure students have the knowledge to make sound financial decisions now and with regard to future earning.



WorkSkills

WorkSkills is a multifaceted Level 2 BTEC course that prepares students for the world of work. It provides a structured place for students to explore various career pathways and learn skills that would support them in a workplace.

At the end of this course, students will know their rights and responsibilities at work, understand health and safety expectations, and be able to apply problem-solving skills to work situations.

Transition

Students leaving the sixth form complete a transition programme where they are supported to explore and apply for various post-18 options, such as university, employment, apprenticeships, further education and supported internships. As part of this programme, students receive careers guidance from a careers advisor, attend fairs and careers events, and also visit universities and potential places of work. Parents and sixth form staff work closely together to support young people with choosing and applying for appropriate and aspirational next steps.

Independent study

As part of preparing students for the workload associated with their courses, we have mandatory independent study sessions. Students can work on their coursework with support staff or take part in enriching activities such as reading articles on current affairs, watching informative documentaries or doing further research on their courses.

Independent study is an opportunity for staff to re-teach students if necessary. It also allows students to ask staff questions, seek clarifications, and work in a safe and quiet space. It is also an opportunity for staff to support students to manage their deadlines and succeed in their course.

Courses at West Thames College

One of the key benefits of joining our sixth form is the wide variety of courses.

Students can attend any of the courses that our partner West Thames College delivers – subject to the college’s entry requirements. While the majority of courses are held at West Thames College’s Isleworth campus, some courses are held at its Feltham campus. To see the full sample of the courses on offer, visit West Thames College’s website: west-thames.ac.uk.



Science

These courses give students the opportunity to work with specialist equipment in the college laboratories, attend a range of workshops on topics such as radiography, and visit museums and universities. Studying science can lead to great career choices, such as food production and development, conservation, chemical development and manufacturing, veterinary medicine and forensic science.



Health, social care and childcare

Studying these courses enables students to learn practical skills in health and social care and undertake work placements in health and care settings such as children’s nurseries and care homes.



Business

There are several courses on offer to allow students to explore various roles and the business environment. This is the first step into a career in areas such as sales, marketing and public relations, accounting, management and human resources.



Computing and information and communications technology (ICT)

These courses enable students to learn in specialist ICT suites, take part in work experience and visit local businesses. Students learn how to support computer users, understand how digital information is spread and solve problems with technology.



Animation and game design

These courses enable students to develop artistic and technical skills using industry-standard software such as Maya, Mudbox, Unity, After Effects and Photoshop. Animators are in very high demand in the UK and can be employed in areas of the entertainment industry such as TV, film and video gaming.



Creative and digital technologies

These courses will enable students to work on Apple Mac computers and use professional software including Final Cut Pro, Photoshop and After Effects. People working in this industry can be responsible for creating content, websites and apps, and coding, designing and testing games.



Art and design

These courses are accredited by the University of the Arts London. They provide access to specialist studios for photography, fine art, 3D design, fashion and graphics. Careers in art and design can include prop design, web design and roles in the fine arts, such as jewellery design, sculpture, painting and photography.



Media

These courses will enable students to use a TV studio with professional cameras and chroma key sound effects. They will engineer live gigs and work on live briefs. Job roles in this industry can involve working on content or in administration as a technician, director, broadcaster or radio presenter.



Performing arts and dance

Students will take part in workshops led by directors and industry professionals, have work experience opportunities and visit prestigious West End venues. There are a variety of job opportunities both offstage and onstage in the spotlight.



Music

These courses will enable students to learn in music technology production suites and recording studios using software such as Logic Pro X, Pro Tools and Reason. Students will also organise, engineer and perform live gigs. Careers in music include songwriting, live entertainment, tour management, and composing music for films, TV and theatre.



Hairdressing

These courses will enable students to train in professional salons, which will be open to the public. Hairdressing is not just about working in salons; career opportunities include roles in film, TV and theatre, and working behind the scenes at fashion shows.



Beauty therapy

Students are able to take part in competitions both in college and nationally, and work alongside professionals. Students will also learn about salon management, administration and retail. Career areas include working as a beauty or spa therapist, make-up artist or salon owner.



Specialist make-up

Studying these courses will enable students to work in professional make-up studios. Careers in specialist make-up can lead to work in areas such as TV, film and theatre.



Uniformed public services

These courses will prepare students for a career in one of the uniformed services, including the fire service, ambulance service, police and armed forces. Visits are arranged for students to the Intelligence Service or UK Border Force.



Construction, building trades and logistics

Students will study in the specialist construction workshop, which is equipped for skills such as plumbing, carpentry, painting, decorating and electrical installation. There are a huge range of career choices in the construction industry, including design, planning and project management, as well as practical work.



Motor vehicles

Students will gain experience in a fully functional garage workshop, a realistic working environment with industry-standard equipment. The government is committed to the UK becoming a world leader in electric and driverless technologies, which offers exciting opportunities for those with experience and skills in the motor industry.



Travel, tourism and aviation

Our location close to Heathrow Airport makes West Thames the ideal place to study travel, tourism and aviation. There is a wide range of careers available in theme parks, heritage sites, visitor attractions, passenger transport and hospitality.



Engineering

By undertaking this course, students will receive high-quality training in an industry-standard engineering workshop and logistics training facility, with computer-controlled and laser cutting machines. Engineers use maths and science to turn ideas into reality, working anywhere – in buildings in the local community, in aerospace engineering facilities or even on spacecrafts.



Sport

These courses will give students the prospect of developing skills and gaining qualifications in sports leadership, lifeguarding and coaching. Students also have the opportunity to go camping, canoeing, orienteering, abseiling and climbing. There is a wide range of careers to choose from, such as sports journalism, photography, advertising, personal training and refereeing.



Work experience

Every student in the sixth form will undertake a work experience placement appropriate to their course. We will support students and families in sourcing work placements and provide one-to-one support at the placement if needed.

To help prepare for the placements, students will create their CVs and participate in interview role-plays. At the placements, they will be supported in problem-solving situations that may occur in their workplaces.

We are keen that our students engage in ongoing employment or volunteering opportunities in the community to develop these work-related skills.

This is some of the feedback we have received from our work experience partners where our students have undertaken placements.

“

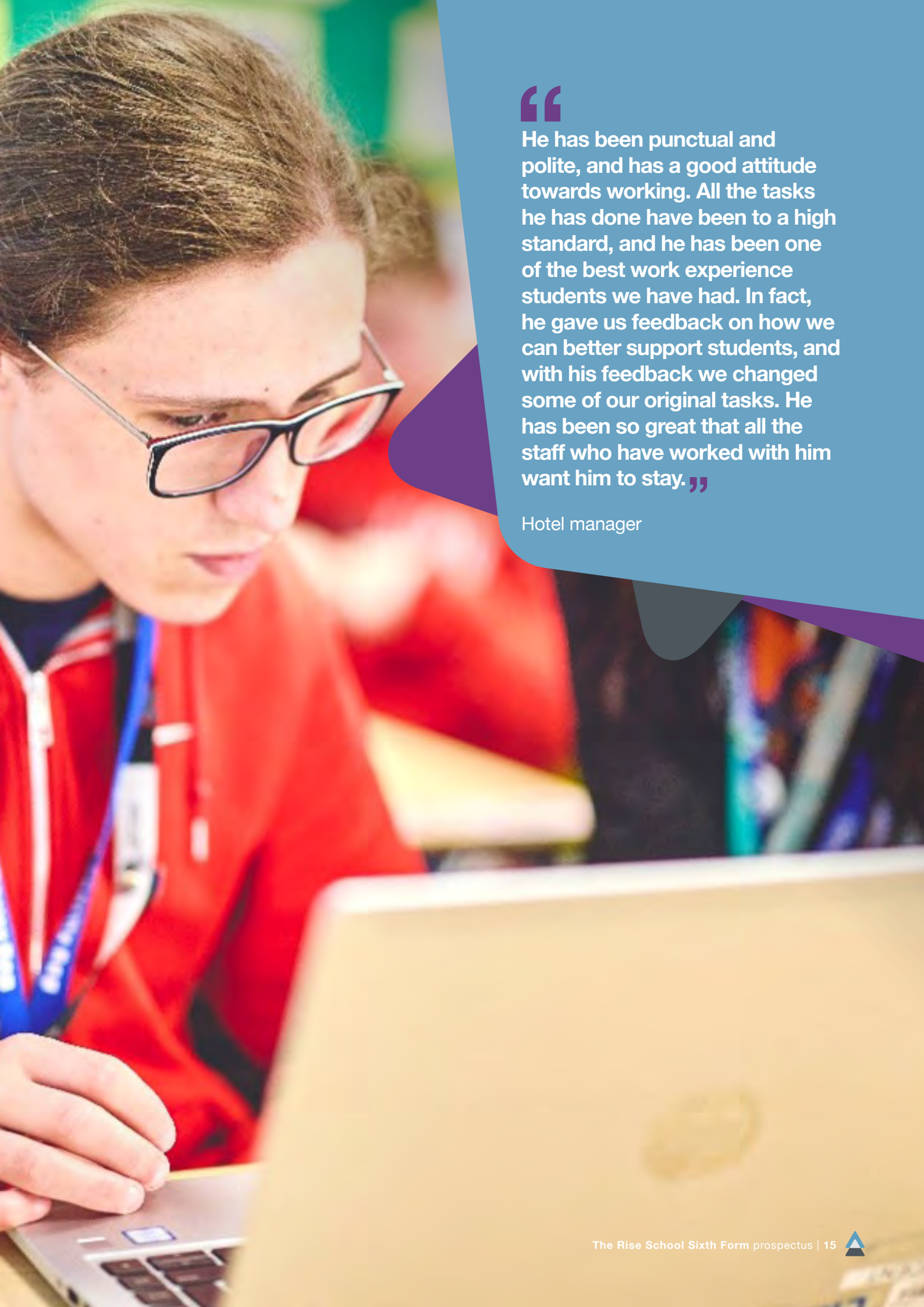
The [student] worked exceptionally well with the children and had a great rapport with them. He supported their learning and also worked well with staff.”

Primary school assistant head teacher

“

He has been engaged and very caring towards all the patients he has met. He has grown in confidence and has been really eager to learn. He has been a pleasure to have.”

Physiotherapy office



“

He has been punctual and polite, and has a good attitude towards working. All the tasks he has done have been to a high standard, and he has been one of the best work experience students we have had. In fact, he gave us feedback on how we can better support students, and with his feedback we changed some of our original tasks. He has been so great that all the staff who have worked with him want him to stay.”

Hotel manager





The Ambitious Approach



The Rise Sixth Form support staff at West Thames College have been a fundamental part in helping my son achieve independence as he moves towards adulthood. ”

Parent

The Ambitious Approach:

How we deliver our curriculum

We have high aspirations for our students. Our goal for all students is that when they leave our school they will have the opportunity to access employment, further education or training and to live as part of the communities of their choice.

The Ambitious Approach puts quality of life at the centre of all we do. It is based upon a student's indisputable rights to be:

- treated with dignity and compassion
- valued
- listened to
- supported to have the best quality of life possible
- empowered to make choices and decide on how they want to live their life.

All children and young people at The Rise Sixth Form have an Education, Health and Care (EHC) plan that outlines their aspirations, outcomes, needs and support. We regularly and comprehensively monitor, evaluate and report on progress. We offer a broad, balanced and relevant curriculum. Pupils have access to a range of qualifications and non-accredited learning, according to their interests, desired outcomes and abilities.

We also place importance on nurturing and supporting the wellbeing of all our learners and fostering as much independence as possible.

We work with parents and carers in a partnership that focuses on the child or young person and their future plans and hopes.

We also value the voice of our learners in decision-making about their future. As communication can be difficult for many of them, we invest in skills and resources to allow them to take part in a variety of ways.

The safety and security of our pupils are paramount. We have in place robust child and adult safeguarding policies and processes.

We are constantly developing, searching for and open to new ethical and evidence-based approaches that help our young people. We share our experiences and knowledge with others to enhance expertise in the field of autism education.

The Rise Sixth Form is subject to Ofsted inspections, which are published online by Ofsted and on our [website](#).



Our trans-disciplinary team

One of the benefits of The Rise Sixth Form is its specialist team. Our trans-disciplinary team roles include:

Teachers and lecturers, who are responsible for delivering the curriculum

Speech and language therapists (SaLTs), who support learners to develop their communication and social skills

Occupational therapists (OTs), who help students to manage sensory issues and develop functional life skills

Behaviour specialists, who work with students to overcome behaviours of concern that could create barriers to learning

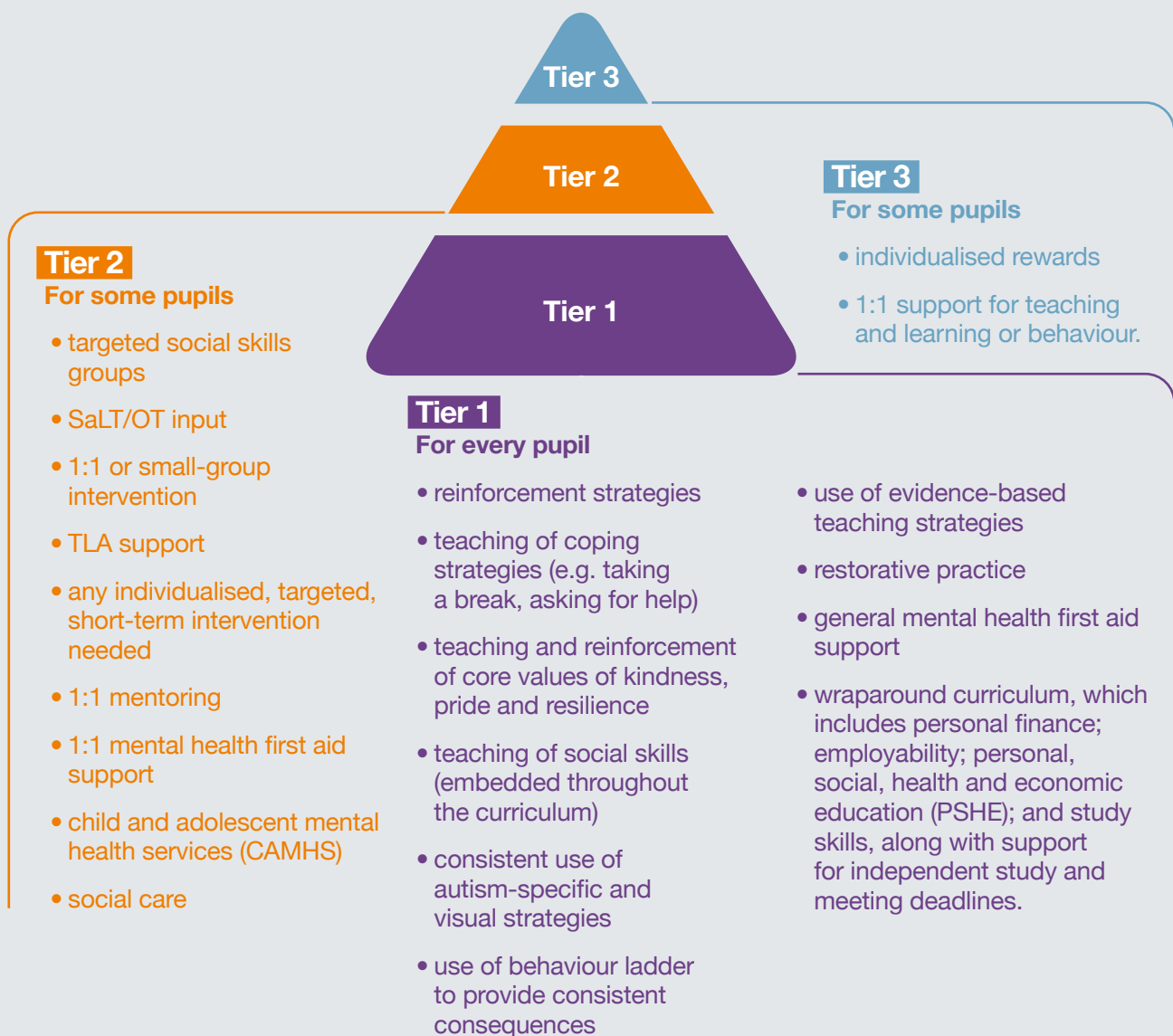
Teaching and learning assistants (TLAs), who support students with their learning and behaviour

We want the team of adults around your child to be the very best they can be.

Therefore, we invest significantly in a wide range of training and continuing professional development for all staff.

School-Wide Positive Behaviour Support

The Rise Sixth Form uses School-Wide Positive Behaviour Support (SW-PBS) as its framework. We introduced SW-PBS using the following three-tiered approach:



Our sixth form culture is defined by our core values: be proud, be resilient, be kind and be independent. Staff, students and families voted on and agreed these values. We teach skills that demonstrate these core values and make sure they are reinforced in everything our students and staff do, and in all interactions with families.

Students reflect on and consider how they can demonstrate these values at school, at home and in the wider community. We use the three-tiered SW-PBS support framework to make sure all students learn new skills that will enhance their quality of life. Our aim for all of our students is that they lead their lives as independently as possible, with the smallest number of restrictions.

All students at the sixth form benefit from our Tier 1 support, which includes:

- autism-specific strategies and effective practice – e.g. using visual support in the classrooms
- teaching all students coping strategies, such as being able to ask for help when needed or asking to take a five-minute break from a task instead of engaging in disruptive behaviour to avoid a lesson
- teaching wellbeing and integrating wellbeing into our morning routine
- teaching a dedicated Personal Growth and Wellbeing course, which focuses on a range of important topics including resilience, identifying strengths and having positive relationships
- using restorative practice as an approach to prevent incidents between peers, resolve peer conflict and repair harm to relationships when conflict occurs; teaching students about each other's perspectives to build empathy and understanding; and assisting students to recognise mistakes as learning opportunities for growth
- using 1:1 mental health first aid to increase self-esteem and maintain student wellbeing and mental health.



Keeping our pupils safe

All staff at The Rise Sixth Form have a responsibility for the safety and wellbeing of our students.

We take seriously our responsibility to safeguard young people at risk. We have designated safeguarding leads and robust practices in place to ensure student safety. Our safeguarding policies and our

Preventing Extremism and Radicalisation Policy, which protects young people from extremism and radicalisation, can be found on our website.

The Rise Sixth Form has a team of safeguarding leads.

Parent and carer support

If our students are to make good progress socially and academically, parental participation and engagement are essential. There are frequent formal and informal opportunities for parents and carers to feel supported and engage with us as a sixth form community. These include:



Year webpages

These are updated regularly with news and information from Years 12 and 13.



Community events

All parents and carers are invited to attend a range of fun events throughout the year, such as the Curry and Quiz Night.



Annual review

This formal review of the student's EHC plan is an opportunity to discuss progress towards the outcomes set out in the plan and set new targets for the year ahead.



Celebratory events

All parents and carers are invited to celebrate the achievements of our students, for example at awards evenings.

Admissions

As part of the annual review of your child's EHC plan, you will be considering the next stage of their education provision and have an opportunity to request where the local authority sends your child's paperwork for consideration of a place.

If you are exploring post-16 options for your child and would like to arrange a visit, please contact the admissions team at sixthform@theriseschool.com. The student's local authority will then send paperwork requesting that The Rise Sixth Form consider the student's needs.

If it appears from the local authority's initial inquiry that a placement at the sixth form may be suitable for the prospective student, the following procedure will take place:

1

The prospective student will be invited to visit the sixth form and spend time being taught alongside other students.

2

Following the assessment of the prospective student, the admissions panel will make a recommendation to the local authority either to offer a place or to outline why it feels The Rise Sixth Form is not able to meet the student's individual needs.

3

If there is a place and the admissions panel feels that the prospective student's needs can be met, a formal offer will be made in writing to the student's local authority.

4

The local authority must accept the formal offer in writing to confirm the place. If at the time of receiving confirmation the published admissions number for The Rise Sixth Form has been reached, the prospective student's name will be placed on a waiting list.

5

Prior to entry, parents and students will be required to sign a home-school agreement.





Contact us

The Rise Sixth Form
Sir Joseph Banks Building
West Thames College
London Road
Isleworth TW7 4HS

☎ 020 3873 2202

✉ sixthform@theriseschool.com

🌐 theriseschool.com

Follow us

🐦 [@riseschoolUK](https://twitter.com/riseschoolUK)

📷 [theriseschoolartsdepartment](https://www.instagram.com/theriseschoolartsdepartment)

Ambitious about Autism is the national charity standing with autistic children and young people.

We believe every autistic child and young person has the right to be themselves and realise their ambitions.

We started as one school and have become a movement for change. We champion rights, campaign for change and create opportunities.



Ambitious about Autism Schools Trust is an exempt charity in England and Wales and a registered company 08335297

Published – July 2023

How to find us

The Rise Sixth Form is located on the same site as West Thames College.

Public transport

Tube – Osterley or Hounslow East, then either 117, 235, 237, E8 or H37 bus to West Thames College or 15-20 minute walk.

Bus – 117 from West London Mental Health Trust to Staines Bus Station, 235 from Three Fishes to Great West Quarter, 237 from Frampton Road to White City Bus Station, E8 from The Bell to Ealing Broadway Station/ Haven Green and H37 from Hounslow/ Blenheim Centre to Manor Road all stop outside the college.

Train – five-minute walk from Isleworth station.

Travelling by car

There is a car park for staff, disabled students and visitors (entrance on Harvard Road). To book a space please contact The Rise Sixth Form. There are parking meters on the roads directly around the campus. The nearest free parking is on Osterley Road.

